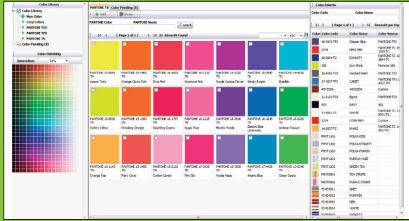


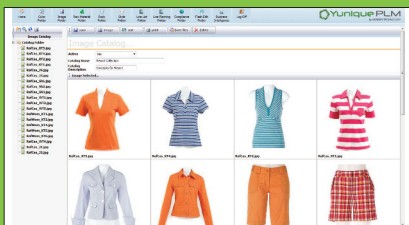
# Yunique PLM

## Key Features



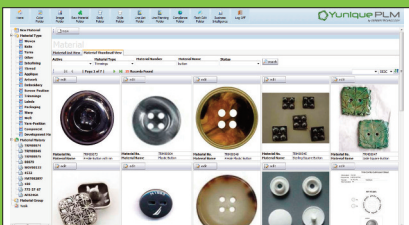
### Color Management

- PANTONE® fashion and home color library
- Color integration from within Adobe® Illustrator®
- Color palette management
- Color “where used”



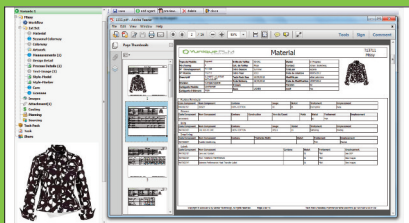
### Digital Library Management

- Image integration from within Adobe Illustrator
- Visual image history with versioning and roll back
- Smart search capabilities
- Textile artwork management
- Concept photo repository
- Image “where used”



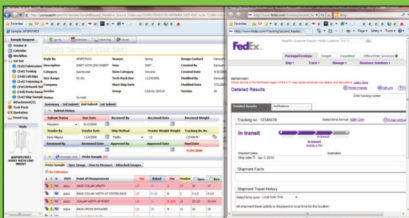
### Raw Material Management

- Raw material libraries
- Material development workflow
- Collaborate and negotiate with trade partners
- Raw material “where used”
- Material batch update for all styles in one step



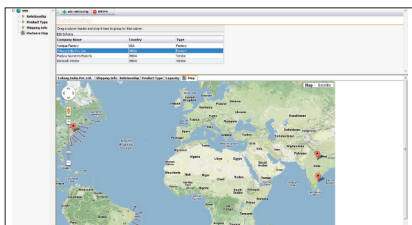
### Style/Tech Pack Management

- Comprehensive tech packs
- Includes “how to measure” guide
- Tech pack versioning control
- Change management with e-mail notification
- Product development pipeline visibility
- Manage multiple size ranges per style



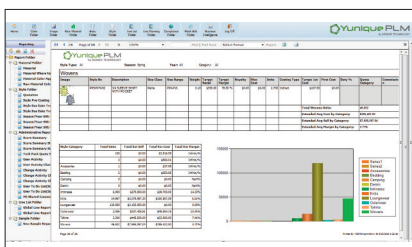
### Sample Management and Tracking

- Sample pipeline management
- Sample tracking with AutoFit™ comments
- 360° fit simulation
- Instant fit review with SampleShoot™
- Interactive visual comments with YuniqueMarkUp™
- Sample tracking via major couriers
- Proactive sample report with reminders



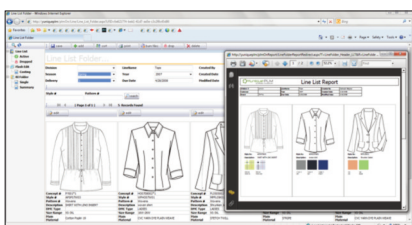
## Supplier Relationship Management

- Provide real-time visibility to trade partners
- Share time and action calendars
- Real-time global collaboration for product approvals
- Offer trade partners read-write capability



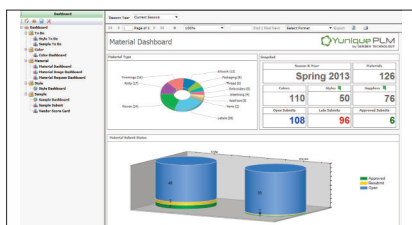
## Costing, RFQ and Sourcing

- Perform multiple "what-if" cost scenarios
- Trigger multiple RFQs to several trade partners
- Request quotation options based on mode and destination
- Compare and monitor multiple quotes
- Manage vendor scorecards
- Analyze profitability



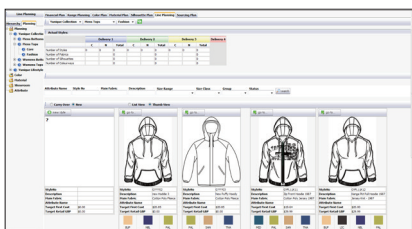
## Line List and Assortment Management

- Manage sales sheet look-book
- Intuitive drag-and-drop sorting
- Organize and administer floor-set collection
- Quick start line plan



## Business Intelligence

- Integrate with other enterprise-wide systems
- Easy-to-use graphical dashboards with drill-down capability
- Make better informed business decisions
- Real time visibility to people, products and process status
- Ability to export reports to multiple formats, i.e., PDF, Excel, Word, CSV, etc.



## Line Planning

- Financial plan (top-down and bottom-up)
- Range plan (new vs. carry-over)
- Color plan
- Material plan
- Silhouette plan
- Product placeholders

YuniquePLM, YuniqueMarkUp, SampleShoot and AutoFit are trademarks of Gerber Scientific, Inc.  
 Adobe is a registered trademark of Adobe Systems, Inc.  
 Illustrator is a registered trademark of Adobe Systems, Inc.  
 PANTONE is registered trademark of Pantone, Inc.  
 Excel and Word are registered trademarks of Microsoft, Inc.