

GERBER ATRIA

The heart of the factory.
The soul of mass production.



LECTRA

Experience the industry
of the future, today.

DIGITAL



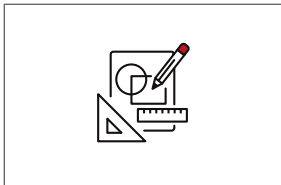


The Gerber Atria cutting solution integrates fully-realized, advanced technology for digital cutting.

With innovation in our DNA, we listened to our customers and developed **the most advanced, high-performing, digital multi-ply cutter on the market** that offers a truly unique experience. Backed by our integrated, end-to-end platform and a global network of experts serving 134 countries, the Gerber Atria is sure to be the brightest star in any cutting room.



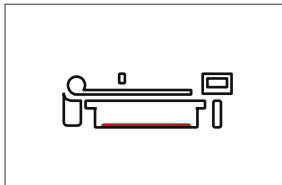
PLAN



DESIGN



DEVELOP



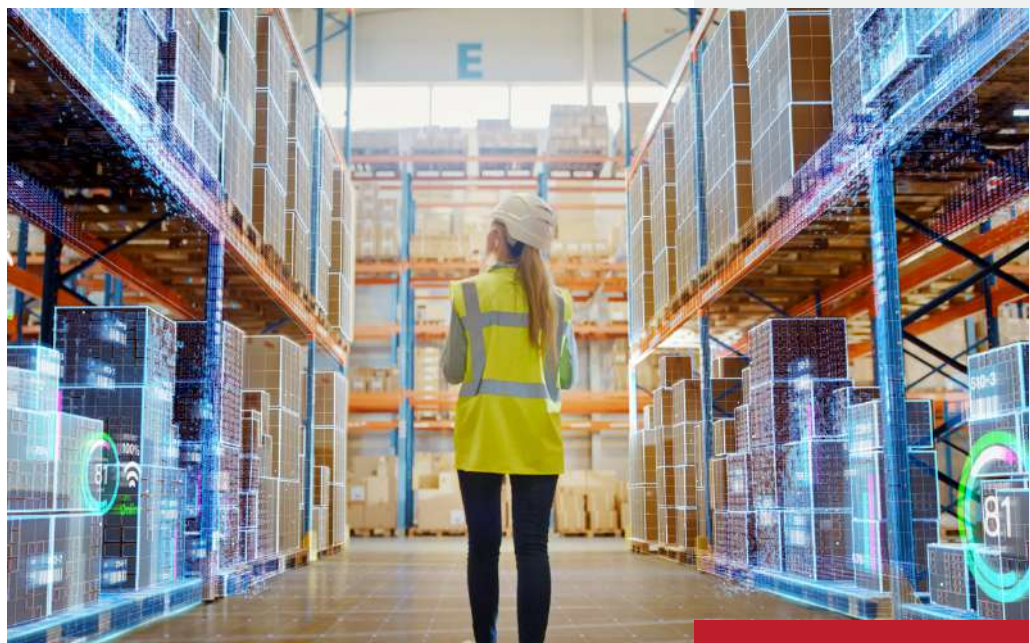
PRODUCE

Mass production made fast and efficient

Go end to end with a fully-integrated digital solution for mass production.

From apparel to automotive interiors to upholstered furniture to personal protective equipment (PPE), consumers across all industries have specific expectations. They expect the highest quality products delivered quickly at the best price and produced in the most sustainable way, making it difficult to keep up. So how can manufacturers exceed the expectations of contractors and end consumers while reducing time to market and remaining cost effective?

With over **50 years of industry excellence**, Gerber Technology has the broad expertise to understand the challenges manufacturers have to overcome in order to be successful and can provide best practices to help their customers conquer those challenges. As the leader of connected platforms, **Gerber's powerful ecosystem of software and hardware solutions** allows companies of all sizes to make mass production faster, sustainable, and more efficient than ever before by leveraging the most advanced technology to connect the supply chain from order to production for a truly seamless process. Gerber is continuing to build on an innovative heritage and is transforming the supply chain with **the next generation of powerful cutting solutions**, starting with the Gerber Atria.





Mass production made fast and efficient.

As the world adapts to a new reality, you need to rethink and reorganize your supply chain in order to survive. Those who leverage the most advanced technology will be able to create a dynamic, end-to-end process that will allow them to **thrive and survive through the changing needs of consumers.**

Manufacturers of all industries are in dire need of a powerful cutting solution that can produce quality, sustainable products at a high level. With unmatched throughput, cutting capabilities, and the ability to maximize ply height with even the toughest materials, the Gerber Atria is transforming the next generation of mass production.

What is **GERBER ATRIA**?

IoT is at the heart of Gerber Atria.

The Gerber Atria is equipped with more sensors and production capabilities, making it Gerber's smartest and most connected machine ever. The robust, easy-to-use, intuitive cutting solution is programmed with advanced algorithms and seamlessly integrates with your CAD/CAM solution for an optimized, digital workflow with precision cutting, unmatched speed and reduced errors.

NOISE INSULATED ENCLOSURE

Ensure quiet, worker-friendly operations.

DYNAMICALLY ADJUSTED RESEALER

Improve cut quality, throughput, and energy use by ensuring vacuum stability.

HYDRAULIC LIFT CTOT

Makes it easy for one person to perform maintenance.

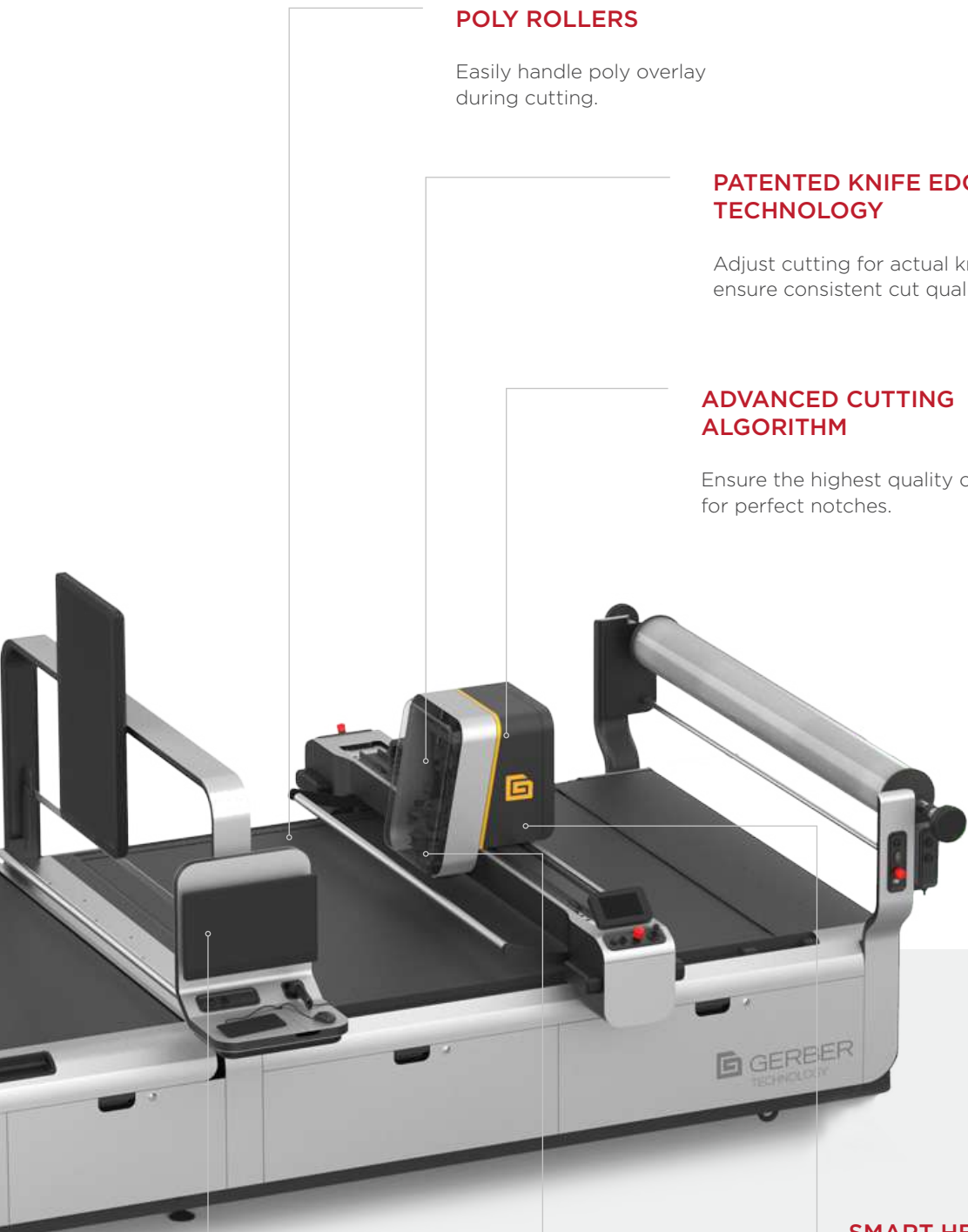
POWERFUL VACUUM FOR 50% MORE THROUGHPUT

Double your throughput with an optional vacuum.

SLEEK, DURABLE DESIGN

Improved user experience designed for the operator.





POLY ROLLERS

Easily handle poly overlay during cutting.

PATENTED KNIFE EDGE SENSOR TECHNOLOGY

Adjust cutting for actual knife wear to ensure consistent cut quality.

ADVANCED CUTTING ALGORITHM

Ensure the highest quality cut for perfect notches.

EASY TO NAVIGATE UI

State-of-the-art control technology for easy training.

SMART HEAD DESIGN

Equipped with intelligent sensors for knife wear detection.

EASY-TO-USE AND MAINTAIN SHARPENER

Keep knives sharper longer, improving consumable usage by 100% in some applications.

A state-of-the-art cutting solution for every challenge

Every industry has very specific challenges they need to overcome, so Gerber delivers a versatile solution that can solve practically every pain point in the process. Whether you have a strict deadline, need a more sustainable process, or are struggling to quickly develop products, the Gerber Atria can help you do it all.

— Meet industry standards every, single, time.

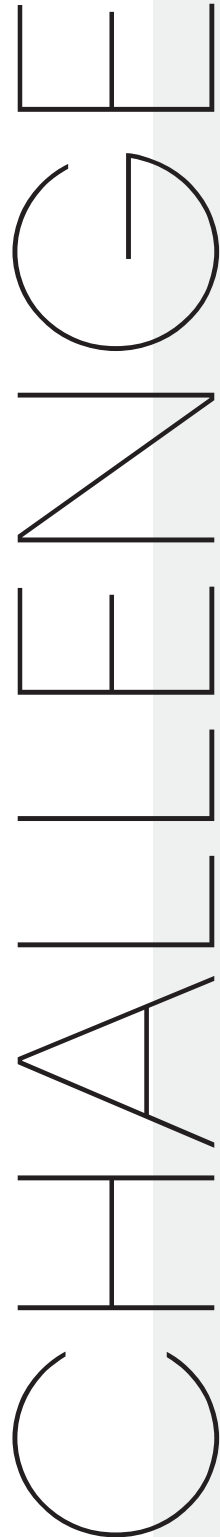
The true power solution for the transportation industry.

With strict industry standards there's no time to waste on rejected cut parts, so why not get it right the first time? With smooth motion, advanced cutting algorithms and integration with Gerber's end-to-end platform, the Gerber Atria ensures transportation manufacturers are able to efficiently cut high-quality parts that meet industry standards every single time. The easy-to-use solution increases throughput, reduces errors and minimizes labor costs, making for a truly innovative experience.

— Get your products to market quickly and sustainably.

The hardest-working solution from denim to workwear.

Whether you're manufacturing denim, synthetics or workwear, you need a solution that will allow you to be sustainable and cost effective while also getting your products to market quickly. The Gerber Atria optimizes the entire supply by seamlessly passing data from your 2D/3D CAD/CAM and PLM solutions directly to the powerful cutting solution, getting your products to market faster than ever before while reducing material waste by as much as 40%. With zero-buffer cutting, optimized nesting and the ability to maximize ply height with even the toughest materials, you can rest assured knowing you're delivering high-quality, sustainable products that are meant to last.



From mass production to customization,
we have you covered.

A flexible, production workhorse for upholstered furniture.

While mass production is still the main workflow for upholstered furniture, as Generation Z, which doesn't like to prescribe to pre-defined trends, begins to enter the housing market, the need for customized furniture will rise. The Gerber Atria makes both of these workflows possible with powerful algorithms that make it easy to precisely cut a variety of fabrics including vegan leather. Through an intuitive interface and enhanced IoT connectivity, the Atria gives manufacturers complete control over their process from design through production, making it simple to manage costs and pricing while still delivering products to the market at a rapid rate.

Save time, save more lives.

A fast, efficient process for the highest quality protective equipment.

Due to the complexity of materials used to produce protective equipment, manufacturers need a dynamic process that will allow them to efficiently produce an effective final product. The Gerber Atria connects the entire supply chain from design through production, allowing manufacturers to quickly and sustainably produce 500,000 protective masks and 150,000 medical gowns per day while reducing material waste by 30%.



Services and support you can rely on



Technology and innovation are a core part of Gerber's DNA, making us the #1 choice for companies all around the world.

With vast industry experience and a global network of Gerber Certified Professionals, you can rest easy knowing you'll always have access to the service, support, parts, and consumables you need to keep your machine up and running at peak performance.



1-YEAR WARRANTY TO KEEP YOUR SYSTEM RUNNING AT OPTIMUM PERFORMANCE

To ensure your system is always operating at optimum performance, every Gerber Atria comes with a one-year warranty which includes all replacement parts, labor, one preventative maintenance session per year, and discounts on additional training.



A SERVICE CONTRACT YOU CAN COUNT ON

Our Prime Service Contracts ensure that you get the Gerber Certified service, support and parts you need to keep your machine up and running at optimum performance. Prime Service Contracts are offered in three different plans, giving you the opportunity to choose the right level of support that best suits the needs of your business. Our plans include a "Full Service Agreement", a "Preventative Maintenance & Parts Support Agreement", and a "Remote Support Agreement".



GERBERCONNECT OFFERS THE REMOTE DIAGNOSTICS YOU NEED TO STAY UP AND RUNNING

Gerber understands how important your cutting solution is to your workflow and how downtime can negatively affect your entire process. The IoT-enabled Gerber Atria is equipped with sensors and production reporting capabilities through Gerber's service and reporting feature, GERBERconnect, offering you a number of options to get the data you need to optimize your production, decrease downtime and reach operational excellence. Every Gerber cutting solution is also equipped with several AI capabilities and remote support options, such as, Augmented Reality and Remote Control, to allow Field Service Engineers to diagnose, and even repair, problems without ever having to visit your facility.



INDUSTRY-LEADING CONSULTING, TRAINING AND SUPPORT TO ENSURE SUCCESS

While it's important to have the latest technology, it's even more important to know how to effectively implement it into your current workflow. Through Gerber's Consulting Services, a team of Gerber Experts will help you optimize your supply chain from design through production by providing advice, best practices and training to help you be successful. You'll also have access to Gerber's online learning platform, Gerber University, to ensure you get the most out of your Gerber system.



GERBER CERTIFIED PARTS AND CONSUMABLES FOR THE GERBER ATRIA

Gerber Certified parts and consumables are the only parts designed specifically for your Gerber system. All Gerber Certified parts and consumables are reviewed, tested and updated to meet quality standards and keep your machine running at optimum performance with maximum throughput, improving total cost of ownership.



LECTRA

We pioneer. You lead.



About Lectra

As a major player in the fashion, automotive and furniture markets, Lectra contributes to the Industry 4.0 revolution with boldness and passion by providing best-in-class technologies.

The group offers industrial intelligence solutions - software, equipment, data and services - that facilitate the digital transformation of the companies it serves. In doing so, Lectra helps its customers push boundaries and unlock their potential. The group is proud to state that its 2,500 employees are driven by three core values: being open-minded thinkers, trusted partners and passionate innovators.

For more information, please visit lectra.com

