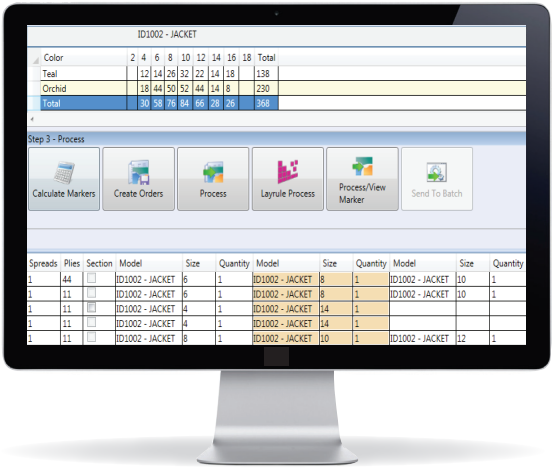
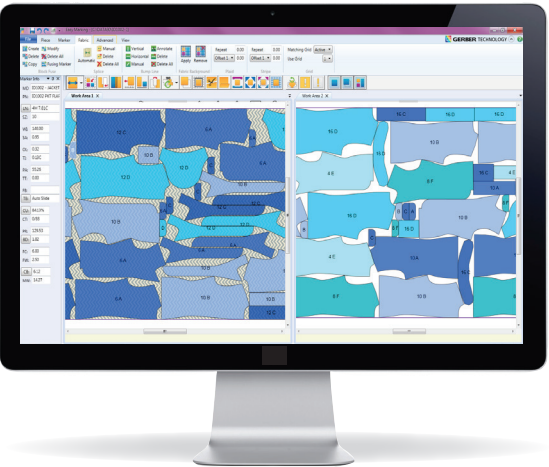


Gerber Technology's computer-aided design, spreading and cutting systems are integrated to seamlessly share data. This enables users to maximize productivity, reduce errors caused by manual data entry and manage work orders more effectively.



AccuMark



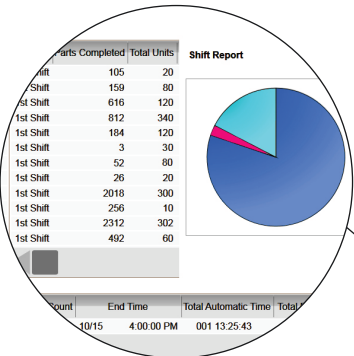
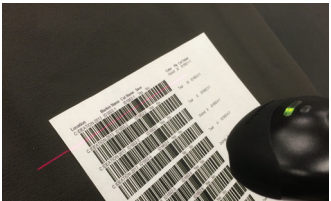
Location	Marker Name	Cut Name	Save	Export	Export Destination	Cut Parameter Table	Order Number	Color	Ply	Cut Ticket
C:\DATA90	ID1002-1	ID1002-1	Yes	Yes	S:\CUT\ID1002-1.job	P-CUTTER	AM-22014	Orchid	44	ID1002-1-1
			No	No		P-CUTTER	AM-22014	Teal	11	ID1002-1-2
C:\DATA90	ID1002-2	ID1002-2	Yes	Yes	S:\CUT\ID1002-2.JOB	P-CUTTER	AM-22014	Teal	11	ID1002-2-1

Using AccuMark's Easy Plan module, users can generate a cut plan very quickly. Simply input model sizes, quantities, colors and fabric types or import these details from your ERP system. Easy Plan creates the cut plan automatically and generates all marker files needed.

Users can interactively edit cut plan results, such as minimum and maximum plies per color and number of bundles.

When making markers, users have a choice. They can either place pieces manually or send markers to AccuNest™ for completely automated marker making. AccuNest employs powerful algorithms to analyze multiple nesting solutions and deliver the one with the highest material utilization.

AccuMark® generates a cut ticket report and a barcode containing the file name, material type and number of plies needed for each spread in the work order.



The spreader operator simply scans the barcode and retrieves all necessary information to prepare the spread job including number of plies, spread length and spreading mode.

When the spread is complete, the spreading system's wireless barcode printer generates a barcode label to attach to the top ply of the spread. The spread then travels to the Paragon® cutter. The cutter operator scans the barcode to retrieve the proper cut file.

After cutting the job, the Paragon system generates a report that details the number of parts cut and number of units cut ("metrics that matter").

With this information, managers are able to compare the details of the job cut with the original Easy Plan cut ticket and track work in progress more accurately.

