

FCK 6100

Designed workplace for stitching
the waist in the seam shadow

FCK 6100

Designed workplace for stitching
the waist in the seam shadow

Technical Specifications

Dimensions

Length 600 mm
Width 1100 mm
Height 1200 mm

Table height

Manually adjustable from 700 mm to 1.100 mm

Weight

Basic equipment 110 kg

Compressed air

Nominal pressure 20 NI/6 bar

Power supply

Rated voltage 220V/50/60 Hz
AC voltage 220V/50/60 Hz
Power consumption 0,7 kWh

Sewing System

Maximum sewing speed 4000 rpm
Stitch length 0,5–4,2 mm
Needle system 134 R
Needle size 80–110 Nm

Examples of output

Up to 600 trousers in 8 hours (depending on the seam length)

Basic equipment

- Sewing head Brother S-7220C-403
- Integrated direct drive sewing drive with controller
- AC voltage 190 V-240 V, 50/60 Hz
- Backtacking button
- Puller transport with pneumatic lifting and lowering
- Machine frame of adjustable height



The sewing machine FCK 6100 was conceived for stitching trouser and skirt waists in seam shadow.

Advantages

- Up to 600 trousers in 8 hours (depending on the seam length)
- Simple operation
- Quick learning process

FILC[®]
GROUP

Rua Zona Industrial n° 236
4580-565 Lordelo PRD
Portugal
Tel. +351 255 100 117

www.filc.pt



More than 6,000 sewing machines worldwide

Since the year 2000, we develop and produce automatic sewing systems for the HAKA and DOB production and market them all over the world. Among others, our range of products include automatic piping pocket, closing seam and serging units as well as engineered workstation

Ranging from the development and construction right up to installation and programming, we complete all work steps in our company in Germany. In this manner, we can ensure uniform and consistently high quality in all stages of production.

Our sewing systems provide functional and process-optimised solutions. We develop small quantities of special machines for specific customer requirements. We shall be pleased to prepare a unique offer even for you.

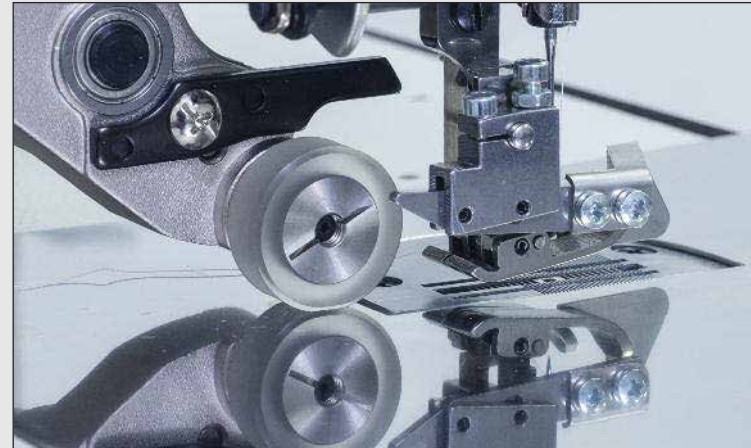
FILC[®]
GROUP

FCK 6100

Designed workplace for stitching the waist in the seam shadow



Control panel for adjusting various sewing functions



The puller ensures optimal and prompt transport of the sewn material

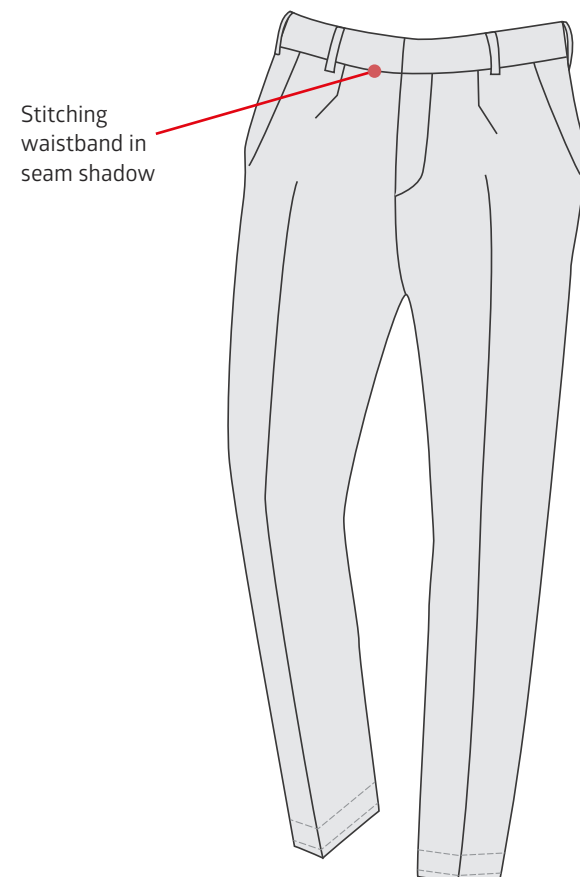


Special presser foot for stitching in the shadow of the seam

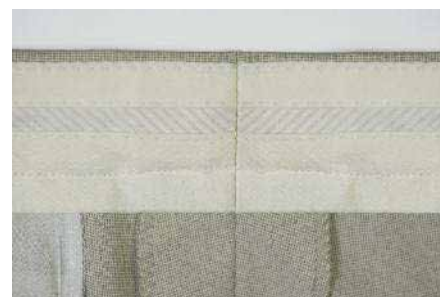


Working table shaped for ease of production

Sample seams



Here is an example of the seam



Advantages

- ✓ Simple operation
- ✓ Quick learning process
- ✓ Up to 600 trousers in 8 hours (depending on the seam length)

Production Process

The EWS 6100 is impressive with its easy operator navigation. With few settings, the machine can be set up for high production yield.

Program pre-selection:

The number of backtack stitches and the pulling speed of the puller transport are preset on the control panel.

Sewing procedure:

The sewing part is placed on the spring-loaded stop. The puller transport brings the waist in place. The sewing part can be sewn quickly over the rounded table guide. Back tacking can be switched on by pressing button, or automatically integrated in seam programm. The sewing operation is completed by cutting the thread automatically.

Work ergonomics:

The system can be operated as a workstation either in standing or sitting position. The height of the table can be adjusted to the body height of the operator.

Performance Profile

The EWS 6100 is an optimally designed workplace for stitching trousers and skirt waistbands in shadow seam. The liberal procedure below the sewing base enables easy display of the sewing part.

The puller transport synchronised to the sewing speed stretches the sewing part and ensures a good seam quality. The pulling speed of the puller can be controlled smoothly and continuously and thus, it can be adjusted to any sewing material. The puller is lifted during by back tacking at the beginning and end of the seam. The number of back tacking stitches can be set on the control panel.