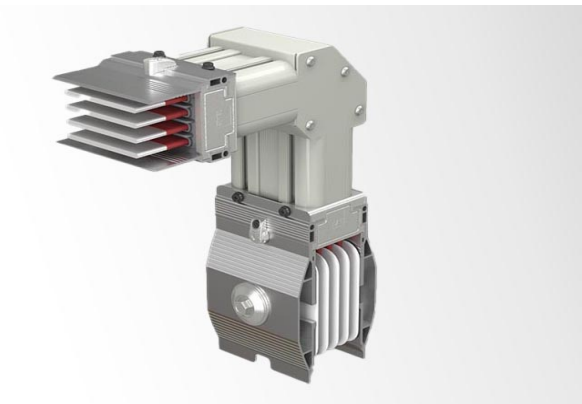


E-Line CCR Cast Resin Busbar System (600–6300 A)



Product Features

- Current capacity from 600 A to 6300 A
- IP68 protection for outdoor and harsh environments
- Aluminum housing with DUROCOMP composite (silicon minerals + epoxy resin)
- Tin-plated copper and aluminum conductors for high conductivity & corrosion resistance
- Epoxy insulation on conductors for enhanced safety
- High mechanical strength and thermal performance
- Resistant to fire, chemicals, corrosion, and seismic stress
- Fully compliant with IEC 61439-6 standards
- Compatible with E-Line KX busbar modules

Product Description

The E-Line CCR Cast Resin Busbar is a heavy-duty power distribution solution engineered for maximum durability in demanding environments. With a current range of 600 A to 6300 A, it delivers reliable performance in outdoor, industrial, and tropical conditions. Its unique DUROCOMP composite structure, combining silicon minerals with epoxy resin inside a robust aluminum housing, ensures exceptional thermal stability, electrical insulation, and mechanical protection. Built with tin-plated copper and aluminum conductors, the E-Line CCR maintains high conductivity while resisting corrosion. Certified to IEC 61439-6, it provides IP68 protection, fire resistance, and chemical resilience, making it the perfect choice for critical applications in energy plants, heavy industry, and infrastructure projects.

Product Specifications

Current Range:	600 A – 6300 A
Protection Class:	IP68 (waterproof & dustproof)
Housing:	Aluminum casing with DUROCOMP composite (epoxy + silicon minerals)
Conductors:	Tin-plated copper & aluminum, full-length
Insulation:	Epoxy coated
Standards Compliance:	IEC 61439-6
Environmental Resistance:	Fire resistant, chemical resistant, corrosion resistant, seismic resistant
Applications:	Outdoor power distribution, industrial plants, data centers, oil & gas, infrastructure

Conductor Configuration

Aluminium and Copper Conductor:

- 3 Conductor (L1/L2/L3)
- 4 Conductor (L1/L2/L3/N)
- 4 ½ Conductor (L1/L2/L3/N/ ½ CPE) - Clean Earth
- 5 Conductor (L1/L2/L3/N/CPE) - Clean Earth

Conductor Material and Rated Currents

E-Line CR Busbar

Aluminium Conductor:

600A / 800A / 1250A / 1600A / 2000A / 2500A / 3000A / 3300A / 3600A / 4000A / 4500A / 5000A / 5400A

Copper Conductor:

650A / 850A / 1000A / 1250A / 1600A / 2000A / 2500A / 3200A / 3400A / 4000A / 4500A / 5000A / 5750A / 6300A